

# AD

MARCH-APRIL 2017

INDIA

₹150

ARCHITECTURAL DIGEST THE MOST BEAUTIFUL HOMES IN THE WORLD

## INDIA DESIGN NOW

FIFTH ANNIVERSARY SPECIAL

OUR BIGGEST ISSUE EVER!

# AD50

THE 50 MOST INFLUENTIAL ARCHITECTS  
& INTERIOR DESIGNERS 2017



IN COLLABORATION: RAHUL MEHROTRA AND ASHIESH SHAH  
PLUS SHARP NEW HOUSES BY BIJOY JAIN AND VIKRAM GOYAL

# AD50

## THE AVANT-GARDE

### MALIK ARCHITECTURE ▼

MUMBAI

KAMAL AND ARJUN MALIK,  
KETAN CHAUDHARY

**PHILOSOPHY** “[We first] understand the context, which can be quite elastic depending on the project, and analyse the existing archetypes and improve upon them. Nature also serves as a nucleus, and determines the path of a project,” says Arjun.

#### PROJECT IN FOCUS

The Welcomhotel Jodhpur (*pictured below*) has been conceived as



a counterpoint to the stark, rugged topography of the city, with a series of gradually unfolding courts intertwined with landscaped gardens and pools.

#### FAVOURITE BUILDING

“From the step wells of Gujarat to the ancient amphitheatres of Greece—there isn’t a single space, because everything casts a glimpse into the evolution of civilization,” says Arjun.

#### INFLUENCES

Carlo Scarpa, Luis Barragán, Louis Kahn, Le Corbusier, Charles Correa.

#### RECENT DISCOVERY

The French quarter and Auroville, in Puducherry.

#### CURRENT PROJECTS

Their own weekend home outside Mumbai, a school in Gujarat, a multipurpose commercial space in Kochi, a home in Jaipur.

[malikarchitecture.com](http://malikarchitecture.com)

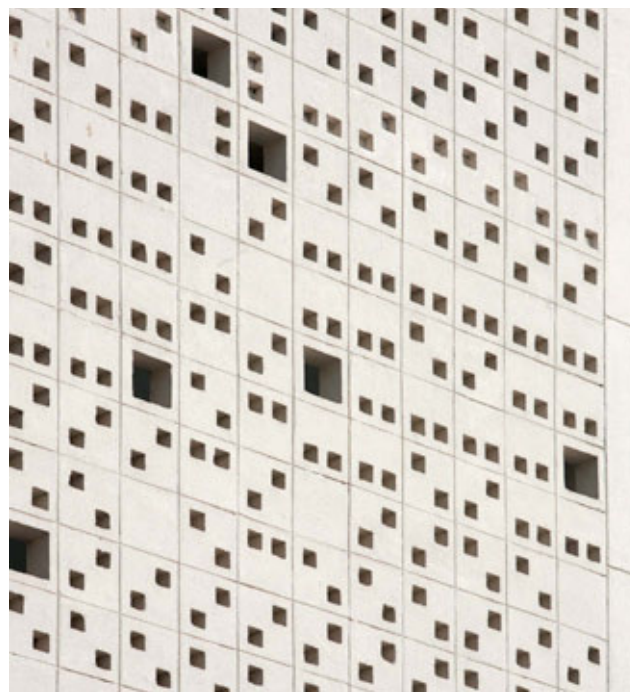


PHOTO: JATINDER MARWAHA

### MORPHOGENESIS ▲

NEW DELHI

SONALI AND MANIT RASTOGI

**PHILOSOPHY** “We call it SAIL—an acronym for sustainability, affordability, identity and liveability,” says Sonali.

#### PROJECT IN FOCUS

“The cement jali at the British School (*pictured above*), in New Delhi, is our interpretation of a very traditional Indian architectural element; we

managed to do it in a very cost-effective and eco-friendly way.”

**INFLUENCES** Louis Kahn, Luis Barragán, Ricardo Legorreta, Ludwig Mies van der Rohe, Oscar Niemeyer, modernists, and 20th-century regionalists.

#### CURRENT PROJECTS

Namami Gange, the redevelopment of the ghats between Allahabad and Varanasi; the Surat Diamond Bourse, the largest single office building and the largest community building in the world.

#### FAVOURITE ARCHITECT

“I follow the work of Herzog & de Meuron, because every [design] of theirs is different; it’s always a surprise,” says Sonali.

**CLIENTS** The ITC Group, Infosys, British Council, Harley-Davidson, Adani Group, Tata Housing, The Lalit Group, Shapoorji Pallonji.

[morphogenesis.org](http://morphogenesis.org)



PHOTO: BHARATH RAMAMURTHAM